

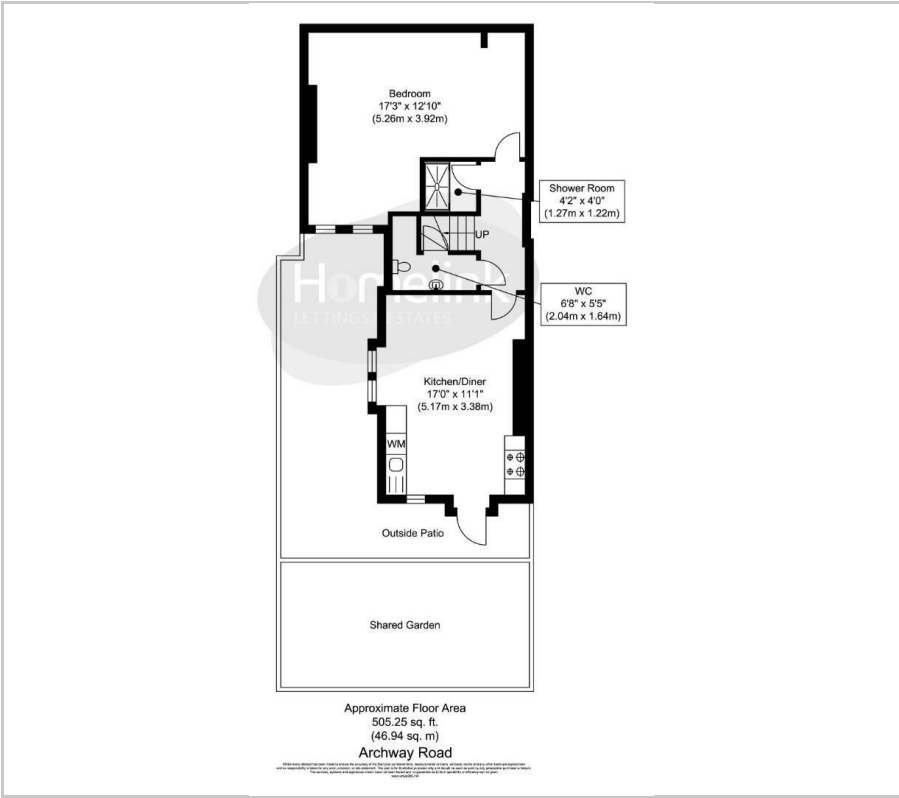


Archway Road, Highgate, N6

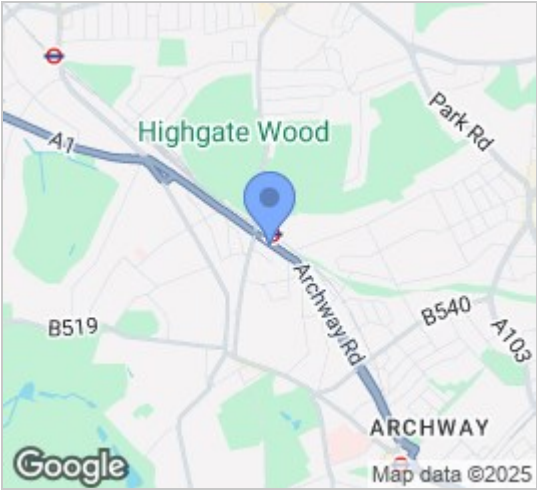
£1,500 PCM



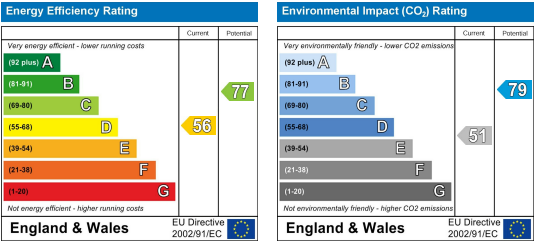
Floor Plan



Area Map



Energy Efficiency Graph



Viewing

Please contact our Homelink Lettings & Estates Office on 0208 882 2112 if you wish to arrange a viewing appointment for this property or require further information.

- Lower Ground One Bedroom Flat
- Open Plan Kitchen-Lounge
- Laminate Flooring Throughout
- Gas Central Heating
- Direct Access to Communal Garden
- Opposite Highgate Station
- Spacious Bedroom
- Fitted Kitchen with White Goods
- Double Glazed Throughout
- Available now

**\*\*ACCESS TO GARDEN\*\*** Homelink are pleased to offer for rent this well presented basement flat in the popular Highgate area. The property consists of great benefits such open plan kitchen/lounge room, large bedroom, fully fitted kitchen including white goods, gas central heating, double glazed throughout, and is available now on an unfurnished basis.

Great location as the property is stones throw away from Highgate underground station as well as local amenities close by. Bus routes towards Holloway, Crouch end and Muswell Hill available close to by. ideal for young working professional commuting into London's city centre.

Call and speak to one of our friendly lettings team members. Early viewings recommended to avoid disappointment.

Haringey C/Tax Band - C  
2025/26 C/Tax - £1,962.61



These particulars, whilst believed to be accurate are set out as a general outline only for guidance and do not constitute any part of an offer or contract. Intending purchasers should not rely on them as statements of representation of fact, but must satisfy themselves by inspection or otherwise as to their accuracy. No person in this firm's employment has the authority to make or give any representation or warranty in respect of the property.

Homelink Lettings and Estates  
62 Chase Side, London N14 5PA  
0208 882 2112 [homelink.co.uk](http://homelink.co.uk)

